

ABSOLUTE AUCTION

WEDNESDAY, MARCH 11, 2026, 12:30 PM



REAL ESTATE



Property Features. Don't miss this one-owner home located on quiet Carol Lane in one of Tallmadge's desirable residential areas. Built in 1979 the property offers 2,320 sq. ft. of living with 4 bedrooms. Tallmadge Schools, convenient access to Tallmadge Circle and major routes. Summit Co. Parcel #60-05158.

Home Features:

- **Second floor:** Four bedrooms including a master suite with full shower bath, walk-in closet, and a small private deck. Additional full shower bath serves the remaining bedrooms.
- **Main floor:** Living room, dining room, and an eat-in kitchen with deck access overlooking the backyard.
- **Lower level:** Family room with rustic stone fireplace, half bath and utility room.
- **Basement:** Walk-out basement with potential to finish for additional living space, rec room, or workshop.
- **Exterior:** Two-car attached garage, mature lot, and quiet residential setting.
- **Utilities:** Water well (water at road) & public sewer. Hot water boiler heat. Forced air A/C and whole house exhaust fan.

This home offers space, flexibility, and the opportunity to upgrade to your style—ideal for homeowners, investors, or flippers. Property ready for updates and sprucing.

Terms On Real Estate: 10% down auction day, balance due at closing. A 10% buyer's premium will be added to the highest bid to establish the purchase price. Any desired inspections must be made prior to bidding. All information contained herein was derived from sources believed to be correct. Information is believed to be accurate but not guaranteed.

ONE-OWNER HOME
4-BEDROOM HOME
ON .47 ACRES, 2,320 SF
Tallmadge City, Summit Co.,
Tallmadge Schools

1079 CAROL LANE,
TALLMADGE, OH 44278

www.kikoauctions.com | 800.533.5456

Information is believed to be
accurate but not guaranteed.
KIKO Auctioneers

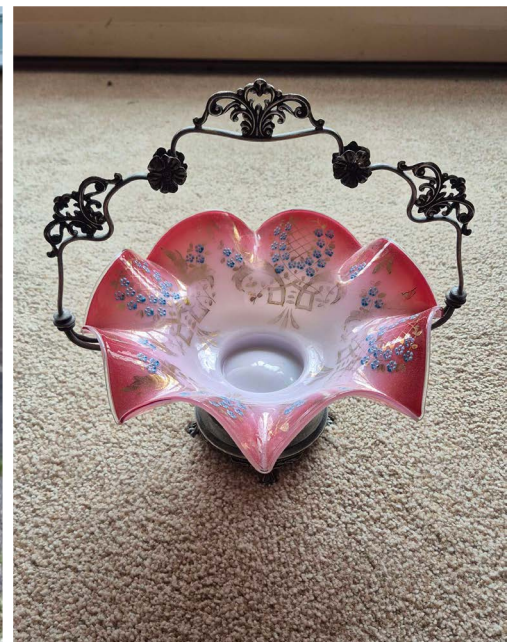


Scan for auction
details, including
directions.

Absolute Auction.
All sells to the
highest bidder.

ABSOLUTE ONLINE ONLY AUCTION

STARTS: FRIDAY, MARCH 6, 2026, 12:00 PM
ENDS: FRIDAY, MARCH 13, 2026, 12:00 PM



**Preview: Wednesday, March 11,
10:30 AM-12:00 PM**
**Pickup: Thursday, March 19,
9:30 AM-1:00 PM**

Autos/Tires/Rims/Related. 1963 Chevrolet Impala SS project car with numerous items transferring with car; 4 mounted 405/35R24" Delinte tires and aftermarket rims; 4 Adventuro AT mounted LT285/75R15 tires and rims; 4 Trail Blade XT 275/45R20 mounted tires and rims; 4 Mounted Goodyear P275/60R20 tires and rims; 4 Cooper Lifeliner P205/75R14 tires and rims; 4 Goodyear P255/55R17 and 1 Michelin 246/45R20 unmounted tires; Stillen late 90s early 200s ford Mustang bumper.

Glassware/Hummels/Costume Jewelry. Victorian Brides basket; Assortment of Cranberry Glass; Depression glass; Hobnail; Mary Gregory vases; Wavecrest pin; Biscuit jar; Assorted China; Green glass and more; 30+ Hummel Goebel figurines; Assorted costume jewelry.

Furniture/Collectable/Household. Corner cupboard; Ethan Allen hutch and table; end stands; maple bedroom suite; dressers; lamps; stands; cedar chest; upholstered furniture; framed artwork inc. oil on canvas; various crocks; Minolta SRT 101 35mm; early children's toys; crock bench; Noblet Paris clarinet; Humpback trunk; Kobalt toolbox; misc. yard tools and hand tools; and more.

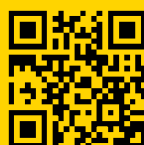
Online Terms: Visa, MasterCard & Wire Transfer accepted. Wire Transfer required on purchases totaling \$1,500 or greater. 15% buyer's premium on all sales. Information is believed to be accurate but not guaranteed. Multi Par auction process may be used. For 3rd party shipping, email your Proxibid invoice to store3008@theupsstore.com or call 330-896-4920 ext. 9. UPS will charge buyers a \$15 pickup fee in addition to shipping costs.



BROOKS E. AMES
AUCTIONEER/REALTOR®
330.703.2732
brooks@kikocompany.com



RICHARD T. KIKO JR.
AUCTIONEER/REALTOR®
330.455.9357 ext. 105
dkiko@kikocompany.com



REALTORS
AUCTIONEERS
ADVISORS

Information is believed to be
accurate but not guaranteed.
KIKO Auctioneers

